



MLS# : 49044-55636

Price : \$76,500

Type : Land for Sale

Size : 2.88 Acres

Address : Antelope Drive Lots 11-30 (Excepting Lots 13, 19, 20 and 21) , Wheatland , Wyoming , 82201

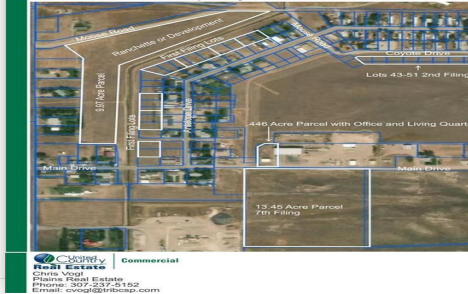
FEATURES

- ✓ Residential Development
- ✓ Level Topography
- ✓ Cable Phone
- ✓ Lots can be purchased separate
- ✓ Year Round Access
- ✓ Private Water
- ✓ DSL
- ✓ Large lot for house & shop

ABOUT THE PROPERTY

Very nice level lots. There are 16 platted lots in this parcel. Lots can be purchased separately (2-3) or purchased together. This is great property for someone that needs a large lot for a house and shop (2-3 lots). Sewer taps are available on Antelope Drive off the Y-O Investments Public Wastewater System or septic service may be a practical option for a combined parcel (2 or more lots). Electric, Natural Gas, Water, Phone, and Cable service is at or near the property line.

Y-O Ranch Property - Wheatland, WY 82201



CONTACT US

CHRIS VOGL

ASSOCIATE BROKER

📞 (307) 267-3055

✉ cvogl@tribcsp.com

🏠 Plains Real Estate

📍 1915 Jim Bridger Ave, Casper, Wyoming, United States, 82604